

MATHER AEROSPACE MODELERS, Inc.

Field Operational Rules

(Updated for 2022)

1. You must have a current FAA sUAS Registration Certificate in your possession to be permitted to fly.
2. You must be a member of the Mather Aerospace Modelers and have a current Full, Three-month Trial, or Youth AMA membership (Park Pilot membership is not satisfactory) and club license in your possession or must be a guest of and accompanied by such member to be permitted to fly. Note: AMA Park Pilot membership is not satisfactory.
3. Pilots operating models must display their current AMA and club membership cards for ease of identification.
4. The AMA safety code and FAA regulations will be strictly adhered to and enforced.
5. No flying when a TFR (Temporary Flight Restriction) is active.
6. No activity other than that related to RC model aircraft is allowed. Rotary wing aircraft are limited to a maximum one lifting rotors (i.e. helicopters).
7. All aircraft must have visible markings of the FAA sUAS registration number.
8. Mufflers are required on all engines .15 and larger unless in a scale model of a full size aircraft.
9. All pilots must maintain visual contact with their aircraft and have manual control of the aircraft at all time. FVP, automated/pre-programmed or free flying is not allowed.
10. Pilots must observe a 400ft ceiling limit. When a full scale aircraft is spotted in the area all models must immediately descend to the lowest safe and practical altitude or land.
11. The designated areas for helicopter are the grassy areas to the Northwest of the pit area.
12. Only fixed wing aircraft are authorized to fly in the area extending north, east and south of the main runway. The main runway can only be used for taking off and landing of fixed wing aircraft.
13. The airspace above the parking area and to the west of Eagles Nest Rd is off limits to any aircraft.
14. Those under the influence of alcohol will not be permitted to fly. No alcoholic beverages are allowed at the flying site.
15. Smoking is not allowed at the flying site.
16. No cell phone use in the pits or on the flight line. Cell phones may be used in the parking lot.
17. Pets are allowed only in the parking and spectators area. All pets must be on a leash.
18. All vehicles will be parked in the designated parking area. The pits and runway are off limits to all vehicles. All vehicles must have valid insurance.
19. All gates must be closed and locked when the field is not occupied.
20. Each pilot is responsible for having access to his/her own fire extinguisher and first aid kit.
21. Each individual is responsible and liable for any accident or damage caused by the operation of their transmitter without having the proper frequency reserved on the frequency board.
22. Violators of the club operational and or safety rules may lose their field use privileges and/or be expelled from the club.
23. A member who brings a guest to the field will be held fully accountable for all actions of that guest. Safe flying practices and adherence to all clubs rules is mandatory. Failure to properly enforce safety and club rules will lead to immediate disciplinary action.

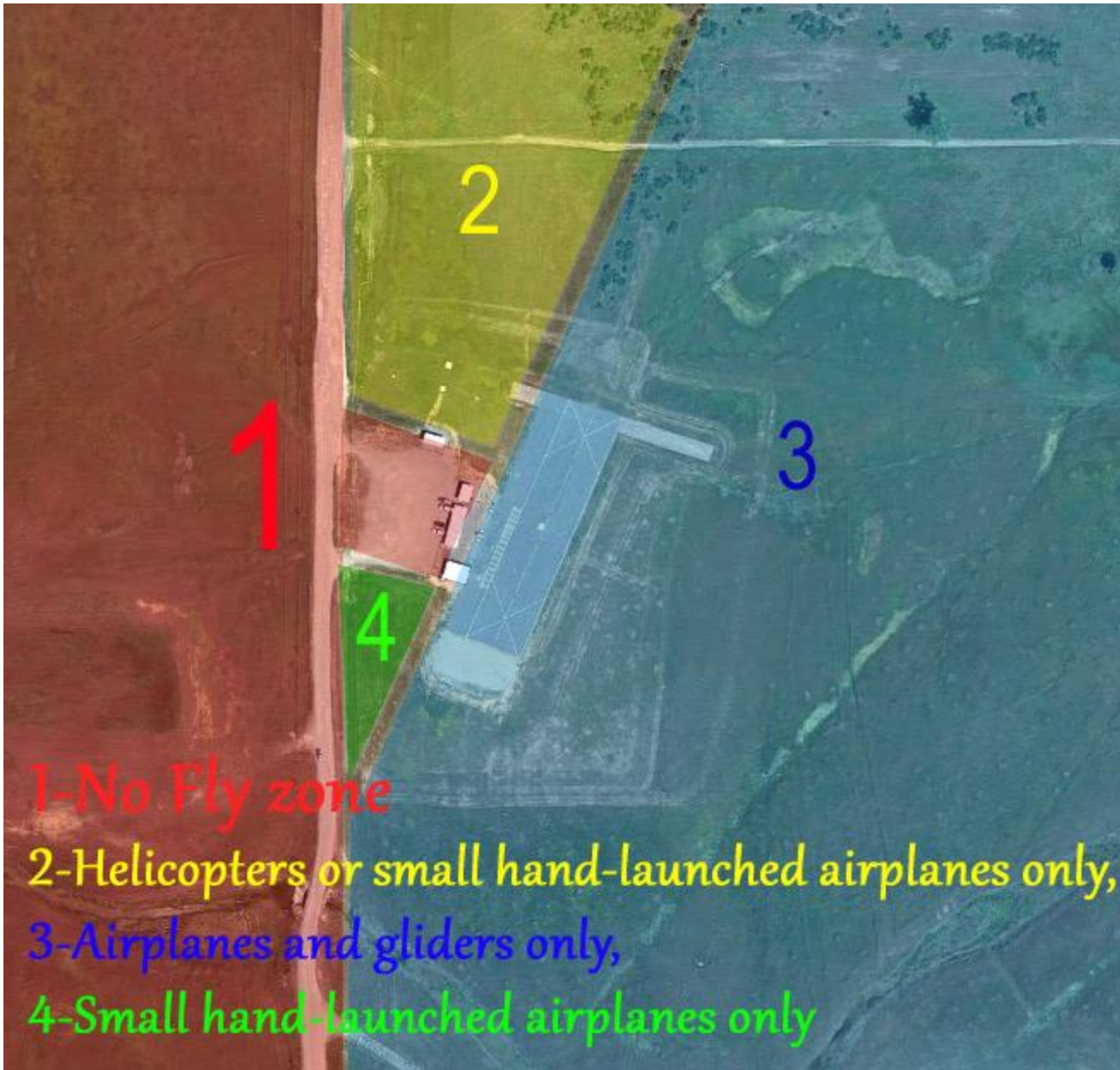
MATHER AEROSPACE MODELERS, Inc.

Field Operational Rules

(Updated for 2022)

page 2 of 2

AIRSPACE MAP



By signing the MASM membership application the member acknowledges that he/she has read and understands the Field Operational Rules for Mather Aerospace Modelers. With the signature on the membership application member promises to abide by these rules and regulations for their own safety and the safety of others.